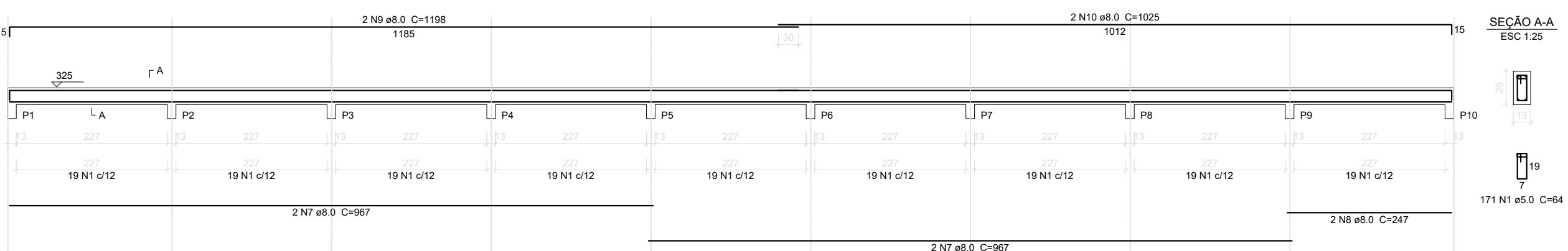
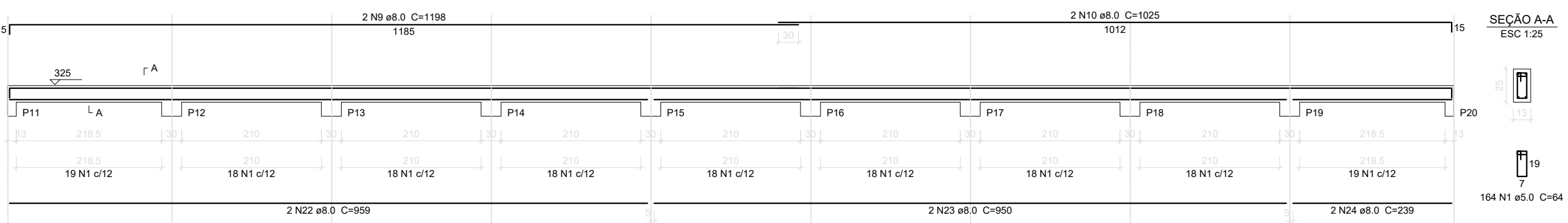


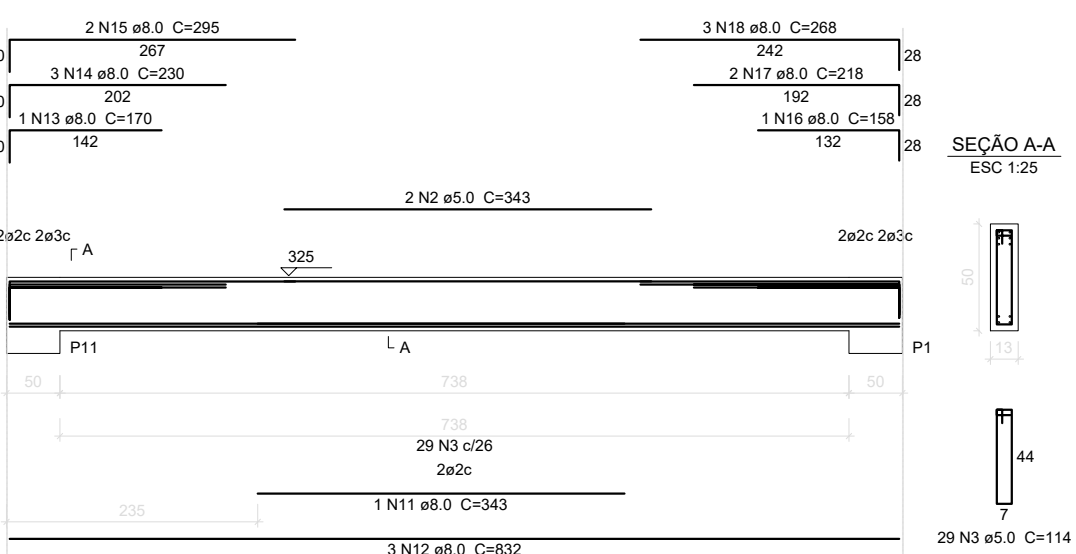
V1
ESC 1:50



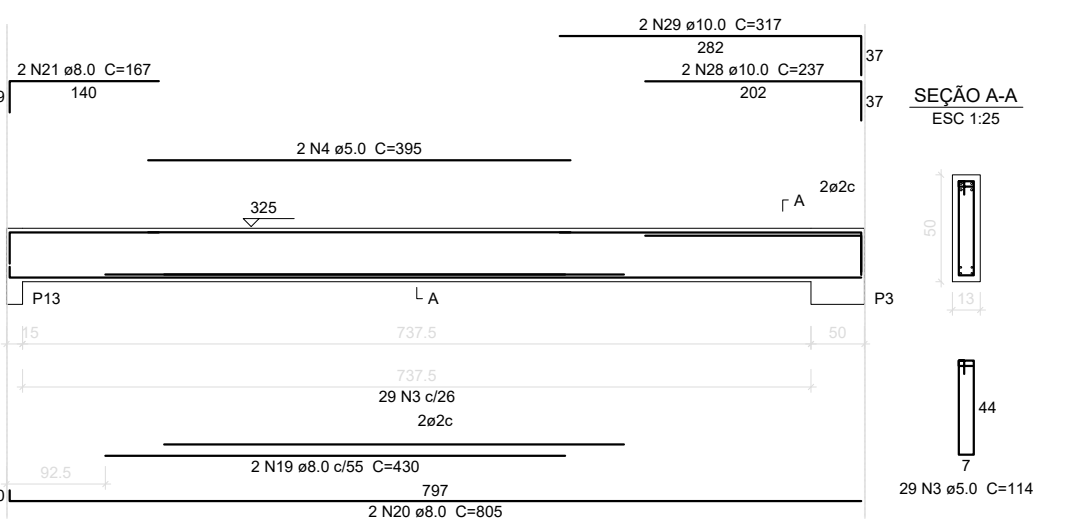
V2
ESC 1:50



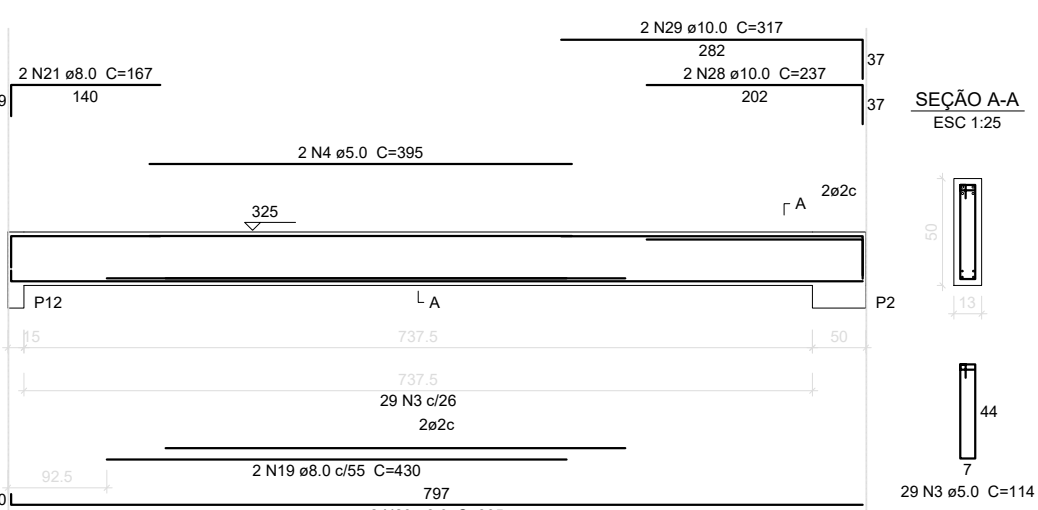
V3
ESC 1:50



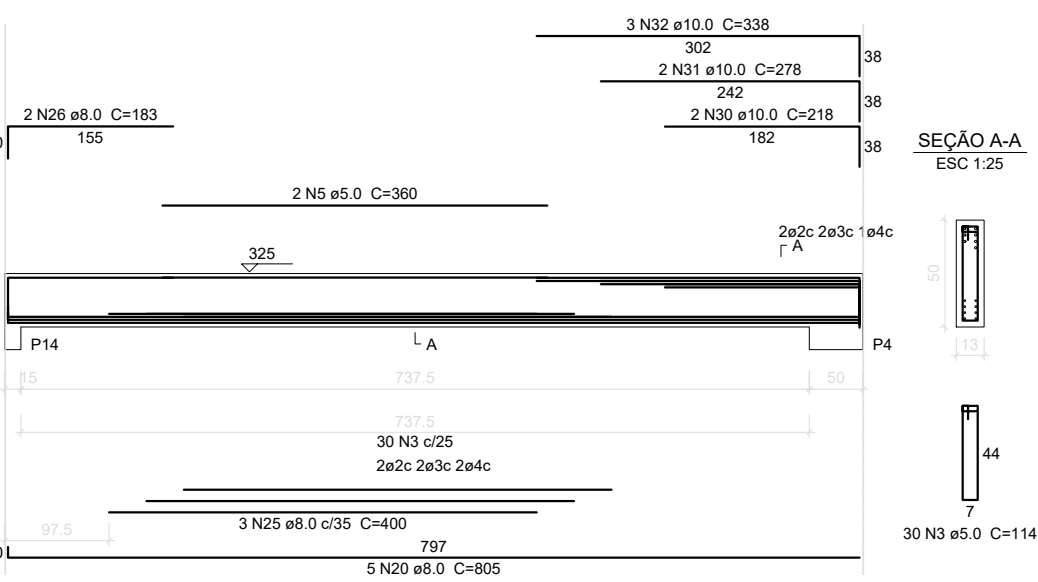
V5
ESC 1:50



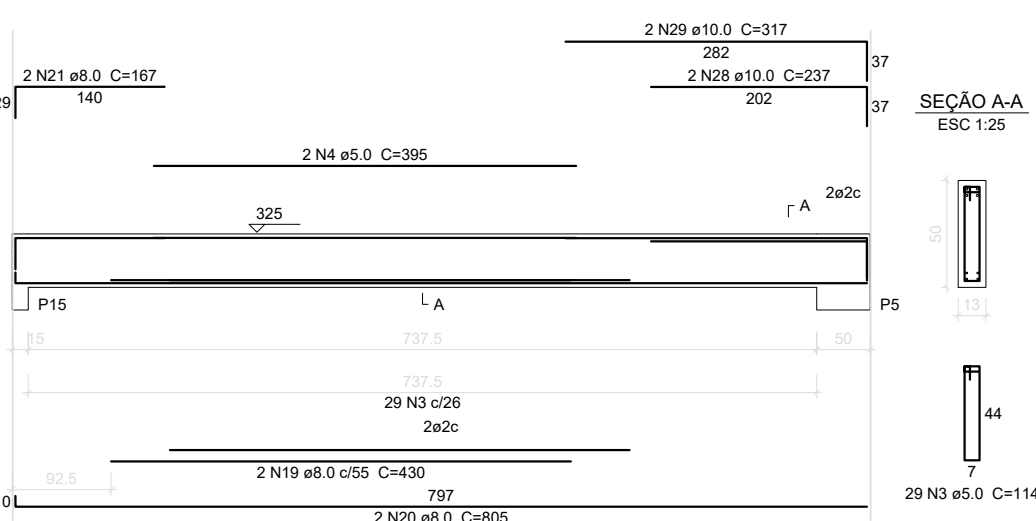
V4
ESC 1:50



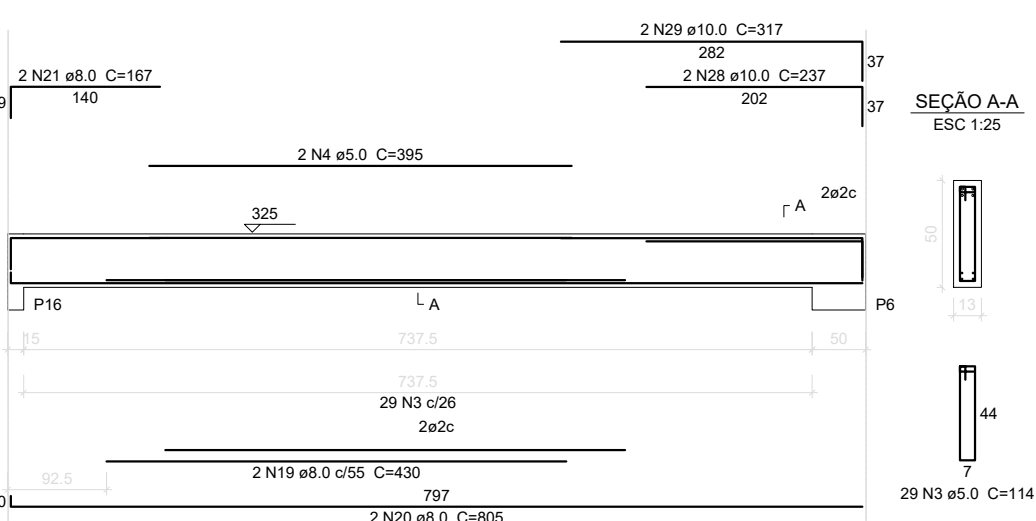
V6
ESC 1:50



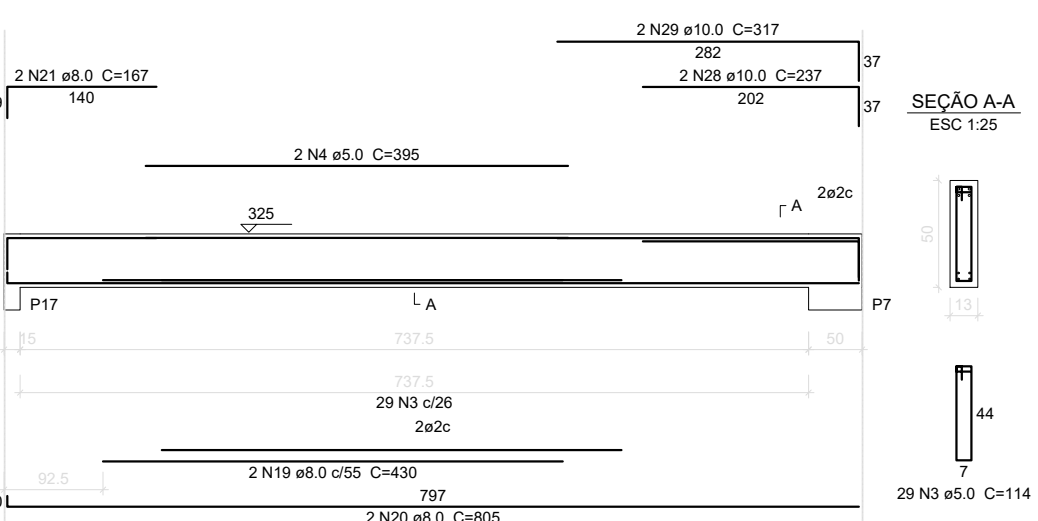
V7
ESC 1:50



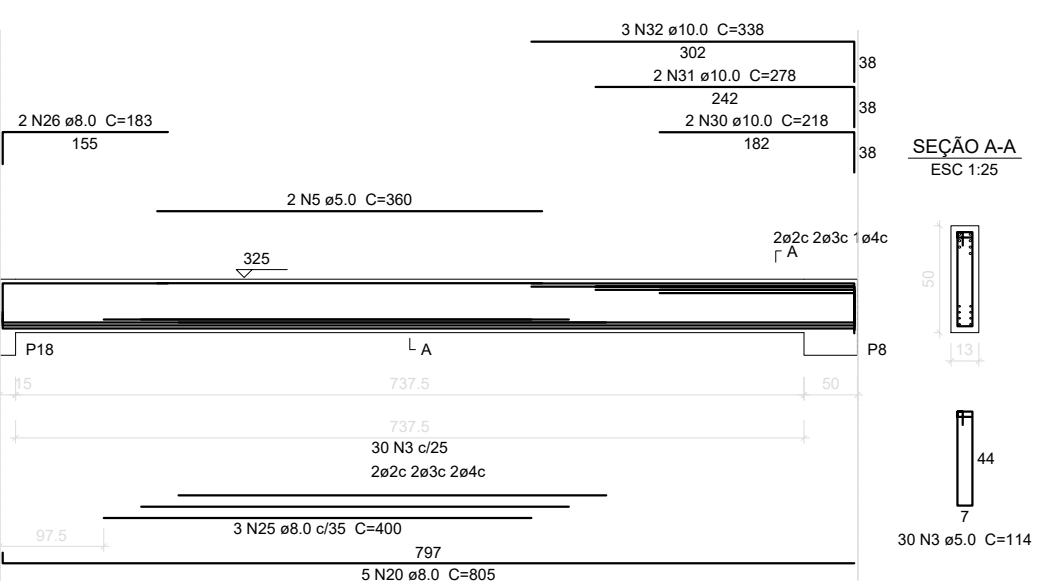
V8
ESC 1:50



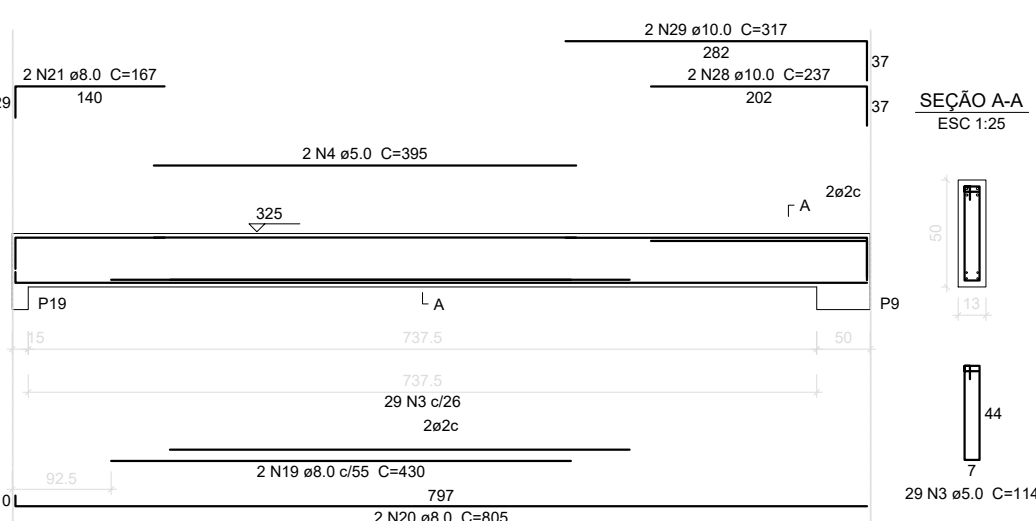
V9
ESC 1:50



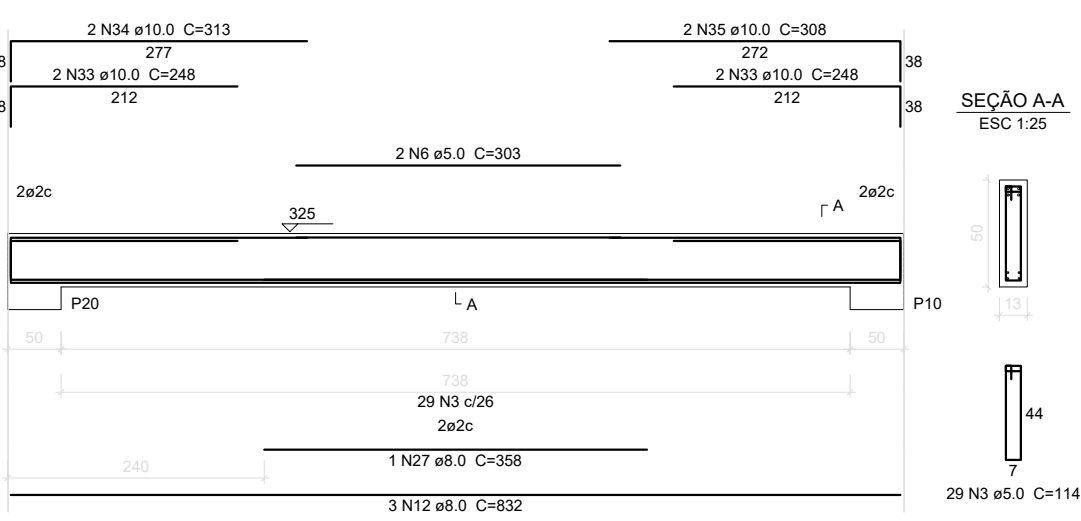
V10
ESC 1:50



V11
ESC 1:50



V12
ESC 1:50



Resumo do aço

AÇO	DIAM (mm)	C.TOTAL (m)	PESO (kg)
CA50	8.0	541	213.7
CA60	10.0	129	79.6
CA60	5.0	622	95.8
PESO TOTAL (kg)			
CA50		293.3	
CA60		95.8	

Volume de concreto (C-25) = 6.67 m³
Área de forma = 118.86 m²

1 VIGAS NÍVEL 325
ESCALA: INDICADA

PROJETO PADRÃO - FNDE

PROPRIETÁRIO :
ENDEREÇO:
MUNICÍPIO - UF:

PROPRIETÁRIO
RESP. TÉCNICO CREA
AUTOR DO PROJETO CAU

DLFO
CREA
RA

OBSERVAÇÕES:

ESCOLA 12 SALAS DE AULA
PROJETO DE ESTRUTURA

COORDENAÇÃO CGEST - Coordenação Geral de Infraestrutura Eduacional	BLOCO C: PEDAGÓGICO VIGAS NÍVEL 325	SCV
REVISÃO R.03	ESCALA INDICADA DATA EMISSÃO MAIO/2014	PRANCHA 17/42
FORMATO (1140x594)		